

Community Education Programs for Adults with Developmental Cognitive Disabilities

October - December 2009



Consortium Members

North St. Paul-Maplewood-Oakdale Schools*

2520 East 12th Avenue
North St. Paul, MN 55109
Patricia Svendsen, Coordinator
651-748-7436
Cheryl Gysbers, Facilitator
651-748-7437 (Consortium Office)
<http://communityeducation.isd622.org>

Roseville Area Schools

1910 West County Road B
Roseville, MN 55113
Cyndi Arneson, Coordinator
www.isd623org/communityed

White Bear Lake Area Schools

4855 Bloom Avenue
White Bear Lake, MN 55110
Andrea Wildman Hilal, Coordinator
www.whitebearcommunityservices.org

Mahtomedi Schools

1520 Mahtomedi Avenue
Mahtomedi, MN 55115
www.mahtomedi.k12.mn.us

South Washington County Schools

8400 East Point Douglas Road S
Cottage Grove, MN 55016
Gretchen Carlson, Coordinator
www.cecool.com

Coordinator's Column –A Dry Summer?

Don't try to tell the Valley Fair goers or the consortium t-ball teams that it was a dry summer! Both groups experienced lots of rain for the daylong excursion and the annual tournament. The t-ball teams faired much better than those attending Valley Fair. On June 6, not only did it rain all day at Valley Fair, it was also cold and windy. The t-ball teams were able to wait out the weather on June 27 and 'play ball' as planned. At the time this brochure went to the printer, only one other outdoor activity was postponed due to bad weather!

As you may have noticed, Community Bridge activities are mostly held off site or out of doors during the summer months. This is due to building maintenance and the lack of air conditioning in the secondary school facilities in the summer. I hope you enjoyed the Community Education activities during July and August as well as some of the free events held in your community.

I am excited to bring Upstream Arts to the Community Bridge this year. Professional artists will work with participants using a variety of artistic mediums. It is their mission as well as ours to foster creativity and social independence through education. The first class runs October and November and a second class will begin in February 2010. Details can be found on page 3.

There are some other new classes/activities listed in this fall quarter brochure. I hope you will try them, I know you will like them. If you have ideas for new classes or activities or you know a specific instructor looking to teach or lead, we want to hear about them. Call the Community Bridge Office with your suggestions.



Joan and Roger appear to be having a grand time at Outdoor Games. Luckily, Roger knew the rules for both croquet and bocce ball, because no one else did! Thank you, Roger.





Meet Your Neighbor: These days our neighbors and the people who work with us come from a variety of cultures. Will you share your culture, your traditions, your recipes, your music, and your stories with Community Bridge participants? They want to know you better. Community Bridge staff will help you and pay you. We hope to have one cultural awareness event in February, March, and April. Call Pat at 651-748-7436 to join the advisory committee in leading one of these special events.

Volunteer Opportunity

Work side-by-side with members from the North St. Paul Environmental Commission to clear the summer trash from the Gateway Trail that runs through North St. Paul. Dress for the weather as we clean, clouds or sun; breeze or wind; warm or cool. There is no fee for the activity but you must pre-register.

Pat Svendsen

#CBNCS1 Oct 10

North St Paul Urban Ecology Center

FREE

9 - 11 am

A Special Thanks

Staff, family members, and PCAs - YOU ROCK!

Community Bridge staff and instructors want to thank you for all you do to insure classes and activities are safe and enjoyable for the participants. Friendships are made, skills are learned, and activities run smoothly because of the assistance you provide. Thank you!

Community Bridge Staff and Instructors

Daily Opportunity

Winter Walking

Walk the hallways of Skyview Community School and/or John Glenn Middle School and forget the worries of inclement weather. Walk Monday through Thursday from 6:30 - 8:30 pm and 9 - 11:30 am on most Saturdays. You will be sent a Walking Club Card and a list of dates the buildings are not available, after you register. The \$15 fee is for unlimited walking October 2009 through April 2010.

Mondays - Thursdays

6:30 - 8:30 pm

Saturdays

9 - 11 am

#CBNE1 October '09 - April '10

\$15

Sunday

Choir

Sing to your hearts desire. Director Karen Hillman selects a variety of music so you are sure to find a favorite or two. The choir will perform publicly at least twice during the year. These performances often include solos and props. Here's your chance to star!

Karen Hillman

\$39

#CBNM1 Oct 4, 18, Nov 8, 22, Dec 6

Lakeview Lutheran Church

6:30 - 8 pm

Dessert and Theater: Oliver

One of the great works of Charles Dickens comes to life on the stage at Tartan High School. Meet Oliver Twist, the young street urchin, who brings out the best in his friends and makes the most of every situation he faces. Enjoy a luscious dessert and coffee or tea on site, prior to attending the musical.

Pat Svendsen

\$12 (staff \$12)

#CBNS1 Nov 1

1 - 4:30 pm

Tartan High School

Monday

Bingo

Join your friends and fellow B-I-N-G-O enthusiasts for an evening of Bingo and laughter. *Bring a treat/snack to use as a prize.* Everyone leaves a winner!

Pat Boon & Melanie Groth \$19

#CBRR1A Sept 21, Oct 12, 26, Nov 9, 16, 23
Fairview Community Center 6 - 7:30pm

#CBRR1B Dec 7, 21, Jan 11, Feb 1, 8, 22 \$19
Fairview Community Center 6 - 7:30pm

Hummin'-n-Strummin'

Celebrate a crisp autumn evening by sitting around a bonfire singing the old campfire tunes and learning some new ones. *Bring a lawn chair to sit on.*

Karen Hillman \$8

#CBNM2 Oct 5 6:30 - 8 pm
Lakewood Hills Park, Picnic Shelter

VFW Flyers

Let's get movin'! Why stay at home when you can drop-in to **VFW Flyers**! Join your friends and make new friends doing arts, crafts, games and much more.

Meets every Monday & Wednesday

6:15 - 8:15 pm

Drop-in: No preregistration necessary

White Bear Lake Area Central Middle School

4857 Bloom Ave, White Bear Lake

*Program questions to: Mary Beth Magnuson at
651.487.7966*

3-D Snowflake Ornament

Paint and decorate a 3-D wooden snowflake to display on your Christmas tree! *Caregivers are encouraged to stay and help.*

Mary Bouska \$12

#CBSC1 Nov 30 6:45 - 7:45 pm
East Ridge High School, Art 1039

CB Volleyball Team – Skill Building + Competition

We are forming a Community Bridge Volleyball Team. This team needs you if you've played the game or just want to learn! The type of ball and the rules of the game will be determined by the team's skill level. After three Monday practices, the team will travel to Forest Lake to take on the LINK team in a friendly scrimmage. More competition may follow throughout the year. Details about the Forest Lake trip on Nov. 9 will be distributed at the first practice session.

Jessica Lee \$25

#CBNTS1 Oct 19, 26, Nov 2
Nov 9 scrimmage at Forest Lake
Maplewood Middle School 7 – 8:15 pm

Ageless, Active, and Fit

Gently challenge your body with this balance fitness class that blends classic walking-style aerobics (no jumping), mat exercises, and use of resistance bands. *Bring an exercise mat and water bottle.*

Mondays Sept 21 - Nov 2, 6 - 7 pm \$35

Mondays Nov 9 - Dec 21, 6 - 7 pm \$35

This class is sponsored by District 622 Community Education - Adult Enrichment Program.
Call 651-748-7437 to register.

Upstream Arts

Upstream Arts invites you to work side by side with some of the Twin Cities' most talented professional artists as you explore a variety of artistic mediums. Act. Write. Dance. Paint. Listen. Imagine. Create. Socialize. Experience. Learn....and have fun! You and your peers will have the chance to express yourself in fresh and creative ways. The mission of Upstream Arts is to enhance the lives of adults and youth with disabilities by fostering creative communication and social independence through the power of arts education.

Julie Guidry - Upstream Arts \$20

#CBNA1 Oct 5, 12, 19, 26, Nov 2, 9, 16, 23

Gladstone, Rm 108 6:30 - 8 pm

This activity is subsidized by a generous private family grant.



Tuesdays

Swimming

Swimming is water exercise, lap swimming, group games including water polo, learning swim skills, or just 'splashing' around to release stress - that's swimming. Volunteers are available, but anyone requiring one-to-one supervision **must** provide a personal assistant in the locker room and in the pool. The pool is 82 - 84 degrees and is accessible by a corner stairway.

Lynn Snyder \$35
#CBNSD1 Oct 6, 13, 20, 27, Nov 10, 17- none 11/3
John Glenn, Pool 7 - 7:45 pm

Art of the Month

You never know what medium - paper, clay, fabric, wood, beads - you will find to express your creativity and imagination. Art of the Month activities often reflect the seasons of the year and always bring out the artist in you. Each class you will take home at least two projects to keep or share with others.

Kitty Anderson \$29
#CBNA2 Oct 13, Nov 17, Dec 15 6:30 - 8 pm
John Glenn, Rm 116 (Rm 119 on 11/17)

Name That Tune

Community Bridge Choir director Karen Hillman will try her best to stump you as she plays the piano. Be the first to guess the title of a popular song or a not so popular song and win a prize.

Karen Hillman \$8
#CBNM3 Nov 24 6:30 - 8 pm
John Glenn, Rm 226

Chili Cook-off

Last year the *Red Hot Chili Pepper* prize was awarded to Pat's Chili for the second time! Can this recipe defend it's title for a third year? Come slice, dice, and simmer a chili recipe and then participate in the judging by sampling all the recipes and casting your vote for the 2009 winner.

Cheryl Gysbers \$10
#CBNF1 Oct 27 6:30 - 8:30 pm
John Glenn, Rm 116

*To enter your favorite chili recipe, send it to:
Chili Cook-off, Community Bridge, 2520 E 12th Ave,
North St. Paul, MN 55109*

Holiday Sweets

When visions of "sugar plums" dance in your head, it's time for Holiday Sweets. Come measure, stir, bake, frost, and decorate cupcakes, cookies and candies.

Cheryl Gysbers \$10
#CBNF2 Dec 1 6:30 - 8:30 pm
John Glenn, Rm 116

Laughter Workshop

Laugh yourself healthy! When we laugh, stress is reduced, blood pressure drops, depression is lifted, your immune system is boosted & more. Come learn laughter yoga.

Mary Margaret Anderson \$10
#CBSW1 Nov 10 7:15 - 8 pm
Woodbury Elementary, Multipurpose Room

Arcade Night at Pinz

Flashing and neon Lights, bells and whistles, laughter and excitement - all describe the atmosphere at the Pinz Family Entertainment Center in Oakdale. Over 70 arcade games are there to challenge your skills. If you choose, your evening can include a visit to Zap City, a two-level, glow in the dark, laser tag arena. Registration includes a 'Z card' loaded with \$10 to redeem anywhere at PINZ (bring additional money if you want to play more). *PINZ will be open to the public during our visit so caregivers are asked to stay and assist participants. If caregivers would like to play any of the games, they may purchase a Z card at PINZ.*

Steve Egbert \$15
#CBNR2 Oct 13 6:30 - 8 pm
PINZ Family Entertainment Center

Wednesday

Ageless, Active, and Fit

Gently challenge your body with this balance fitness class that blends classic walking-style aerobics (no jumping), mat exercises, and use of resistance bands. *Bring an exercise mat and water bottle.*

Wednesdays Sept 23 - Oct 28 6 - 7 pm \$35
Wednesdays Nov 4 - Dec 16 (no 11/25) 6 - 7 pm \$30

This class is sponsored by District 622 Community Education - Adult Enrichment Program.
Call 651-748-7437 to register.

Survival Reading, Writing, and Math

Improving your literacy skills can increase independence and opportunities on the job, in the community, and at home. This class is designed to increase reading, writing, and math skills needed for everyday living. Individual and small group instruction will enhance critical thinking, problem solving, and communication skills.

Lisa Curtis \$48

#CBNB1A Sept 30, Oct 7, 14, 21, 28
Oakdale Elementary, Rm 230 6:30 - 8 pm

#CBNB1B Nov 4, 11, 18, Dec 2, 9 \$48

Oakdale Elementary, Rm 230 6:30 - 8 pm

Wii Demo

Bowling, Golf, Tennis and More

Try your hand at a variety of fun sports! The Wii is the latest craze in interactive, recreational technology. You don't need experience for this, and some of the games can even be played from a seated position. We'll demonstrate bowling, golf, volleyball, tennis, baseball, boxing, billiards and even cow racing! Each person will have an opportunity to try out the games and enjoy a little friendly competition.

Jeanne Bergman \$15

#CBSR3 Oct 14, 21, 28 6:30 - 8 pm

District 833 Program Center, Senior Center

Olav and Oikee

Visit with Olav Iverson the Farmer and Oikee the Pig as they roam the room in a motorized John Deere 'A' tractor. Olave and Oikee are two of Alfred Wolfram's four-foot tall robotic puppets. They have come to discuss their life on the farm and their travels from here to there. Olav and Oikee are also on a mission - to see how many Community Bridge friends they can make in one evening. Since they have never been to visit us before, let's help them set a record for the most friends made in one evening. Olav and Oikee say they are looking forward to their visit and they have lots of jokes to share. Guaranteed to be an evening you won't soon forget.

Cheryl Gysbers \$6

#CBNS2 Nov 4 6:30 - 8 pm

District 622 Education Center, Rm 101/103

Come Sing Christmas Carols

Mary Bouska will play guitar and lead you as you sing some old favorites and learn a few new Holiday songs.

Mary Bouska \$4

#CBSM4 Dec 9 6:30 - 7:45 pm

East Ridge High School, Rm 2045A

Roller Skating – Red, White, and Blue Style

Mark Veteran's Day by wearing patriotic red, white, & blue apparel while roller skating at the Saints North Rink. The rink is reserved just for Community Bridge ensuring a safe environment for skating and meeting your friends. Fee includes skate rental, but you may bring your own skates if you prefer. Wheel chairs are welcome, but they cannot be pushed by a roller skater.

Pat Svendsen \$8 (\$4 wheelers)

#CBNR4 Nov 11 6 - 8 pm

Saints North Roller Rink

Crafts at East Ridge High School

#CBSC2 Team Pennant

Proudly display the Minnesota Vikings purple and gold with this team pennant that says "Go Vikes".

Oct 7 6:45 - 7:45 pm \$15

#CBSC3 One Sided Standup Haunted House

Paint and add scary effects to a wooden haunted house shape.

Oct 21 6:45 - 7:45 pm \$15

#CBSC4 Christmas Pail with Ornament

Decorate a metal pail and paint a carved wooden Christmas ornament to put inside.

Nov 11 6:45 - 7:45 pm \$15

#CBSC5 Sponge Paint a Frame

Paint a wooden frame in a base color and then decorate it with sponge painted shapes in contrasting colors.

Nov 18 6:45 - 7:45 pm \$15

#CBSC6 Choose a Christmas Project

Decorate either a faux evergreen wreath or a grapevine Christmas tree with fun Christmas accents and ribbons.

Dec 2 6:45 - 7:45 pm \$15

Caregivers are encouraged to stay and help.

These classes at East Ridge High School are taught by Mary Bouska

Thursday

Holiday Karaoke

Rudolph the Red Nosed Reindeer

All I Want for Christmas is My Two Front Teeth

Grandma Got Run Over by a Reindeer...

Bring down the roof at the District Education Center as you celebrate the season singing festive songs.

J. P. Larson **\$8**

#CBNM5 Dec 17 6:30 - 8 pm

District 622 Education Center, Rm 101

Social Skills for Life and the Community

Learn and practice the skills needed to maintain positive social relationships to maintain a job, get along well with others, and be independent in the community. Social skills such as polite social interactions, giving and receiving feedback, dealing with anger, disappointment and frustration will be addressed. Using real life experiences and every day activities, you will strengthen your life skills and leave with more confidence.

Carolyn Sorenson **6:30 - 8 pm**

#CBSB2 Oct 8, 22, 29, Nov 5, 12, 19 - none 10/15

District 833 Program Center, Senior Center \$49

Crafts at Cottage Grove Middle School

#CBSC7 I Love Elvis Picture Frame

Decorate a frame to display your photo of Elvis (choose a photo in class).

Oct 15 6:30 - 8 pm \$12

#CBSC8 I love to Paint Neat things

Paint a handmade wooden item.

Oct 29 6:30 - 8 pm \$12

#CBSC9 I Love Twinkle Lights

Decorate a holiday basket and fill with pine cones and holiday lights

Nov 19 6:30 - 8 pm \$12

#CBSC10 I love Christmas Trees

Decorate a stuffed felt or wooden Christmas tree.

Dec 10 6:30 - 8 pm \$12

Caregivers are encouraged to stay and help.

Classes held at Cottage Grove Middle School, Room A111 are taught by Mary Jo Schneider.

The Community Bridge Consortium Budget is Stretched to the MAX!

—Your Donations are Needed and much Appreciated—

There has been no increase in state funding for Adults with Disabilities Community Education Programs for almost twenty years yet salaries, supplies, and administrative costs have risen significantly. Miscellaneous donations of any amount will be used to off set class costs for those unable to pay the full price. If you are able, consider making a tax-deductible donation for any of the items lists below.

Printing of a quarterly brochure (\$150)

Mailing of a quarterly brochure (\$150)

Shirts for T-ball teams (\$225)

League Registration Fee for Co-Rec. Softball Team (\$515)

Uniforms/Hats for Co-Rec. Softball Team (\$420)

Special programs or guests (\$300 - \$500)

Dance Refreshments (\$200)

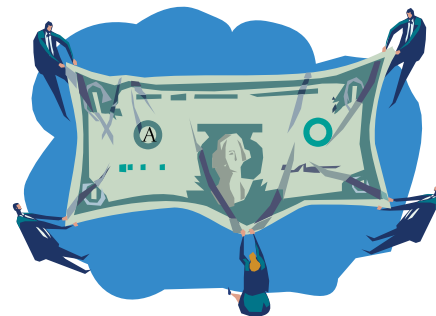
Art Supplies (\$200 - \$300)

T-Ball Tournament Individual Trophies or Medals (\$250 - \$350)

Bus Transportation for a Let's Go Twin Cities Trip (\$150 - \$250)

You can also donate white elephant or new items for activity prizes.

Please make checks payable to and send to: District 622 Community Bridge, 2520 12 Ave E, North St. Paul, MN 55109. Prizes can be dropped off at the same address. Call 651-748-7436 if you need someone to pick up your donated items.



Friday



Special Education Family Recreation Night *For Families and Group Homes*

Fridays: 10/16, 11/20, 12/18,
1/15, 2/26, 3/19, 4/30

Activities start at 6:30 pm
Ice Cream & Cookies Social at 8:00 pm

Otter Lake School,
1401 County Road H2, White Bear Lake, 55110
(Corner of Otter Lake Road and County H2)

No registration Necessary.
Family or staff must attend with participants

*Sponsored by ISD 916 foundation
and ISD 624 Community Education.*

For information call Teddie at 651-489-9577

Friday Night Pizza Party

Relax at the end of the week and join your friends for a night out! We'll provide pizza, music, games to play and a craft to make. If you have a favorite game, music cassette, or CD you'd like to share, bring it along.

Judy Ptacek \$9 (staff \$3)
#CBSR5A Oct 16 6:30 - 8:30pm

Lake Middle School, Cafeteria

#CBSR5B Dec 4 \$9 (staff \$3)
Lake Middle School, Cafeteria 6:30 - 8:30pm

Halloween Costume Dance

Costumed dancers, music and more will abound at the Gladstone Gym this haunted October eve. Costumes are encouraged and fun is guaranteed! Pre-register and pre-pay for this dance.

J P Larson \$10
#CBNS4 Oct 30 6:30 - 8:30 pm
Gladstone Gym

Bingo and Pizza Party

Join your friends and have fun playing B-I-N-G-O. We'll give away cool prizes and treat you to a delicious pizza dinner.

Mary Bouska \$12 (\$3 staff)
#CBSR6 Nov 13 6:30 - 8:30 pm
District 833 Program Center, Senior Center

December Snow Ball

When it snows, it is thrilling, though your nose gets a chilling. To frolic and prance, now is your chance to dance in a winter wonderland. Pre-register and pre-pay for this semiformal dance.

J. P. Larson \$10
#CBNS5 Dec 11 6:30 - 8:30 pm
Gladstone, Gym

Dinner and Theater: The Music Man

North High School presents *The Music Man*, a musical comedy about a con man who poses as a boys' band organizer and leader. He sells band instruments and uniforms to the townsfolk then skips town with the cash. He risks being caught and redeems himself all in the name of love. Enjoy a light dinner at the District 622 Education Center and then off to nearby North High School to see the musical

Pat Svendsen \$16 (staff \$16)
#CBNS3 Nov 20 6 - 9:30 pm
District 622 Education Center

VOLUNTEERS are the Community Bridge's greatest resource. A class assistant's extra hands/heart can better individualize the experience for a participant. Swimming, art, square dancing, basic reading & math, computer and choir are classes that would be greatly enhanced by the hands & hearts of volunteers. Call 651-748-7436.

If you know someone who is looking for an opportunity to help in the community, let them know about the Community Bridge. *The reward is great!*



Community Bridge Consortium Guidelines for Participation

The Community Bridge promotes inclusion of adults with disabilities in a variety of Community Education programs and makes reasonable accommodations to provide an enriching experience for all participants. Your cooperation in following the guidelines listed below helps to make the classes and trips run smoothly and safely.

1. Preregistration is **required** for all classes, activities, and trips. **No walk-ins will be accepted** except for VFW Flyers. This includes dances.
2. You will be notified if classes, trips, or activities are canceled. Plan to attend unless you are notified of cancellation.
3. Participants must be accompanied to the classroom. The instructor/ facilitator is in the classroom no earlier than 15 minutes before class starts. Be prompt in picking up participants following a class or trip.
4. A care provider **must** attend if medication needs to be administered during any event.
5. Participants who require one-to-one personal attention for physical and/or behavioral issues must be accompanied and supervised in classes and on trips by a primary care giver.
6. If more than 3 people are registering from the same address, a care provider should attend the class or trip and supervise the participants.
7. If a behavioral incident occurs, a primary care giver may be required to accompany the participant to all future classes and trips.
8. Refunds will be given for cancellations received two days **before** a scheduled class (except *Trips/ Tours*).
9. All Community Bridge activities are school sponsored, so there is no smoking or drinking.
10. Transportation to and from the class/activity is the responsibility of the participant or care provider.
11. All let's Go Twin Cities participants **MUST** ride the bus to and from events. The bus leaves from and returns to White Bear Lake Area High School South Campus - directions are on page 10.

Take Advantage of all that Community Education has to Offer

Adults with disabilities are encouraged to participate in general classes and activities listed in consortium members' Community Education catalogs. Check the websites for each school district, listed on the front cover of this brochure.

The sponsoring district will make every effort to provide reasonable accommodations to make your experience successful.

Call the consortium office at 651-748-7437 for the Community Bridge Coordinator in your school district.



Directions

Cottage Grove Middle School

9775 Indian Blvd S, Cottage Grove, 55016

From I-94: South on County Rd 19 (Woodbury Dr/Keats) to Indian Blvd. School is on the corner of County Rd 19 and Indian Blvd.

District 622 Education Center

2520 E. 12th Ave, No. St. Paul, 55109

From Hwy 36 in North St. Paul, north on McKnight Rd., right (east) on 11th Ave. (becomes 12th Ave. at North High School. Continue to the District Education Center, park in the east lot.

District 833 Program Center - Senior Center

8400 East Point Douglas Rd. S., Cottage Grove, 55016

Hwy 61 south to Jamaica, left on Jamaica, left on E. Point Douglas Rd. The Senior Center is in the District Program Center two blocks down on the right - just before Applebee's.

East Ridge High School

4200 Pioneer Drive, Woodbury, 55125

From I-494: Lake Rd east to Pioneer Dr. Turn right (south) on Pioneer Dr.

Fairview Community Center

1910 W. County Road B, Roseville, 55113

From Hwy 36 in Roseville, go south on Fairview, right on Co. Rd. B.

Gladstone Community Education Center

1945 Manton St, Maplewood, 55109

From Hwy 36 in the Maplewood area, south on White Bear Avenue. Turn right (west) on Frost Ave. Turn right (north) on Manton St. Parking lot is behind building.

John Glenn Middle School

1560 E County Rd B, Maplewood, 55109

From Hwy 36 in the Maplewood area, south on White Bear Avenue. Turn right (west) on County Road B. School approximately 3/4 mile, on the left.

Lake Middle School

3133 Pioneer Drive, Woodbury, 55125

From I-494, in the Woodbury area, take Lake Road east to Pioneer Drive. Turn right on Pioneer Drive.

Lakeview Lutheran Church

1194 E. County Rd. C, Maplewood, 55109

From intersection of Hwy. 36 and Hwy. 61, go north on Hwy. 61 to Co. Rd. C and take a right. Building on right.

Lakewood Hills Park

2100 Orchard Lane, White Bear Lake, 55110

From I-694: North on White Bear Ave; right on Orchard Lane; the park is just east of the Northeast YMCA.

Maplewood Middle School

2410 Holloway, Maplewood, 55109

From Hwy 36: South on McKnight Rd; east on Holloway

North St. Paul Urban Ecology Center

From Hwy 36, south on McKnight Rd. the Urban Ecology center and parking lot is on the right, just before the walking bridge over McKnight.

Oakdale Elementary

821 Glenbrook Ave N, Oakdale 55128

From I-694 in the Oakdale area, west on 10th St. N; left on Glenbrook Ave N. The school is on the left, park in the southeast lot. Enter using the door by the gym - # S2

Pinz Family Entertainment Center

7520 32nd St N, Oakdale, 55128

From I 694: Take the Hwy 5 exit and head east. Pinz is on the corner of Hwy 5 and 32nd St N.

Saints North Roller Rink

1818 Gervais Court, Maplewood, 55109

From Hwy 36 in the Maplewood area, north on White Bear Avenue. Turn left (west) on Gervais. Turn left on Gervais Court (just past the Norgard apartment complex).

Skyview Community School

1100 Heron Ave, N., Oakdale, 55128

From I-694 in the Oakdale area, east on 10th St. Left on Heron Ave. N. (*Oakdale Library is on the corner.*)

Tartan High School

828 Greenway Ave, Oakdale, 55128

From I-694: Take 10th St exit, west on 10th St, left on Greenway and right into the parking lot.

Tropical Ballroom

1750 Weir Drive, Woodbury, 55125

From I-494: West on Valley Creek Rd to Weir Dr; left on Weir, right into the parking lot of Valley Creek Mall. The Tropical Ballroom is located inside the mall.

White Bear Lake Area High School South Campus

3551 McKnight Road, White Bear Lake, 55110

School is south of County Rd. E, on McKnight Rd. *Let's Go Twin Cities* trips leave from south parking lot.

Woodbury Elementary

1251 School Drive, Woodbury, 55125

From I-494: Take Valley Creek Rd west to Weir Dr, turn right on Weir, turn left on Upper Afton Rd, turn left on School Dr.

COMMUNITY BRIDGE REGISTRATION - PARTICIPANT FORM

Name _____ Day Phone _____ Evening Phone _____

Address _____ City _____ Zip _____

Contact Person _____ Day Phone _____ Evening Phone _____

This is a new address or phone number

Class #	Class Name	Location	Fee
_____	_____	_____	_____
_____	_____	_____	_____
_____	_____	_____	_____
_____	_____	_____	_____

Photo Waiver: May your name and picture be used for press releases/promotions/publications? Yes ___ No ___

Wheelchair/Mobility Access ___ ASL Interpreter _____ Other _____

List any medical, seizure, behavioral, diet or other condition the instructor needs to be aware of: _____

Is one-to-one assistance required? Yes ___ No ___ If yes, a care giver **MUST** participate with registrant!

Make checks payable to Community Bridge. Mail registration and payment to: The Community Bridge Consortium, District 622 Education Center, 2520 E 12th Ave, North St. Paul, MN 55109

STAFF REGISTRATION FORM - *When staff fee required.*

This portion of the registration form must be completed **when there is a fee charged for staff to attend an activity** with the participant(s). The staff is part of the total count in such activities.

Number	Activity	Staff Fee	# of Staff Attending	Staff Fee(s) per Activity
#CBSR5A	Friday Night Pizza Party	\$3	_____	\$ _____
#CBSR5B	Friday Night Pizza Party	\$3	_____	\$ _____
#CBSR6	Bing and Pizza Party	\$3	_____	\$ _____
#CBNS1	Dessert and Theater	\$12	_____	\$ _____
#CBNS3	Dinner and Theater	\$16	_____	\$ _____
#CNSS6	Dance at Tropical Ballroom	\$10	_____	\$ _____
#CBWT1	Mary Poppins	\$39	_____	\$ _____
#CBWT2	Disney Live	\$25	_____	\$ _____
#CBWT3	Lion, Witch, and Wardrobe	\$15	_____	\$ _____
Total Staff Fee:				\$ _____

Group Home Name _____
and _____
Street Address _____



Independent School District 622
2520 E 12th Avenue
North St Paul, MN 55109
651.748.7437 V/TTY

NON PROFIT ORG.
US POSTAGE
PAID
ST PAUL, MN
PERMIT NO 4263



**Act. Write. Dance. Paint. Listen.
Imagine. Create. Socialize.
Experience. Learn.**

Work side by side with some of the Twin Cities'
most talented professional artists.

Details on Page 3



Olav Iverson

Olav will venture to 'the city' along with
Oikee the Pig on Wednesday, Nov 4.
Don't miss their visit!

Details on Page 5